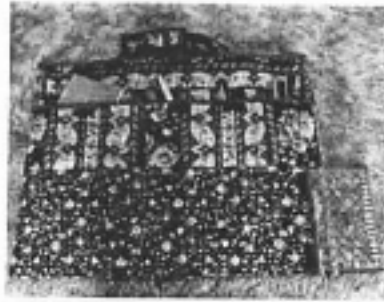


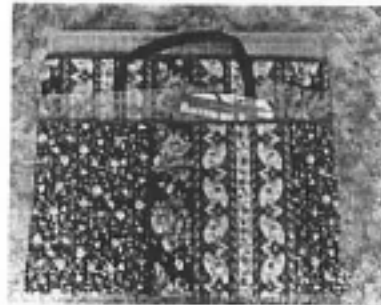
**Quilting Equipment Tote**  
Approx 23-1/2"x25-1/2"

Tote Body fabric: 2-7/8 yard 45" striped pre-quilted double faced or  
2-1/2 yard 45" non-striped pre-quilted double faced  
1/2 yard fabric for binding the edges  
or two 4-yard packages extra wide binding  
\*3 yards 1" webbing for handles, as shown  
or 3-3/4 yards for shoulder straps  
30" 1/2" Velcro  
Thread that matches your fabrics  
Walking foot  
Jeans needle, for strength in stitching multiple layers  
Sewing pins

\* If you can't find webbing  
in a color that pleases  
you, you will need 1/3  
yard of fabric to cover  
it.

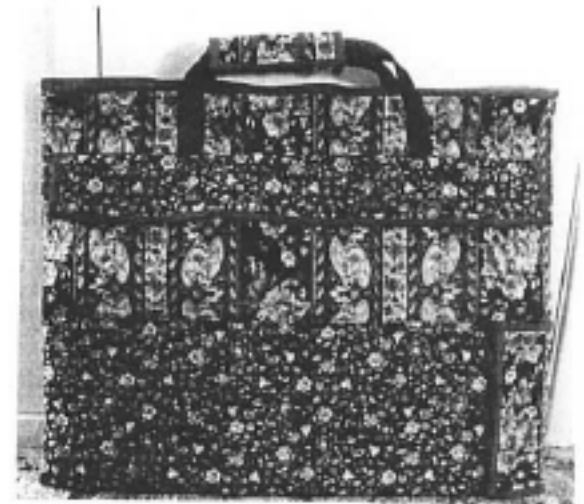


Side 1



Side 2

## ***Quilting Equipment Tote***



A tote to hold an 18"x24" cutting mat, 8-1/2"x24" ruler,  
rotary cutter, pens, pencils, notebook, instruction book, and  
more.

By Anita Hay

**Prewash your fabric. If your fabric shrinks after construction, your equipment may no longer fit in the pockets.**

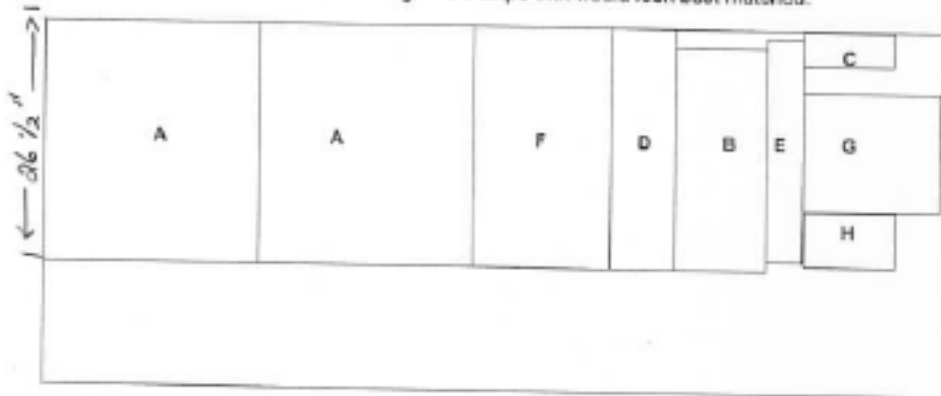
Unless specified otherwise in the instructions, all seams are  $\frac{1}{2}$ ".

**Piece Sizes:**

- A 23- $\frac{1}{2}$ "x26- $\frac{1}{2}$ " – tote (23- $\frac{1}{2}$ " allows for you to carry a 21- $\frac{1}{2}$ " square ruler in the same pocket as your rotary mat. These can be cut at 21- $\frac{1}{2}$ " if you do not intend to do so.
- B 10"x24- $\frac{1}{2}$ " – large ruler pocket
- C 4"x9" – large ruler pocket flap
- D 7"x26- $\frac{1}{2}$ " – accessory pocket
- E 4"x24- $\frac{1}{2}$ " – accessory pocket flap
- F 15"x26- $\frac{1}{2}$ " – square ruler pockets
- G 15"x13" – book or pattern pocket
- H 10"x6" – handle pad

**Cutting:**

**Layout 1:** Pre-quilted, 45" fabric, with lengthwise stripe that would look best matched.



With the stripes positioned in a manner that pleases you, not necessarily at one edge as shown, cut a lengthwise strip of your fabric that is 26- $\frac{1}{2}$ " wide. All your pieces will be cut from this strip. Put the rest to one side for some other project.

Cut piece A twice, piece F, and piece D. ~~cut piece C~~

Cut the length for piece B, trimming 2" from the right.

Cut the length for piece E, trimming 1" from both edges. (E)

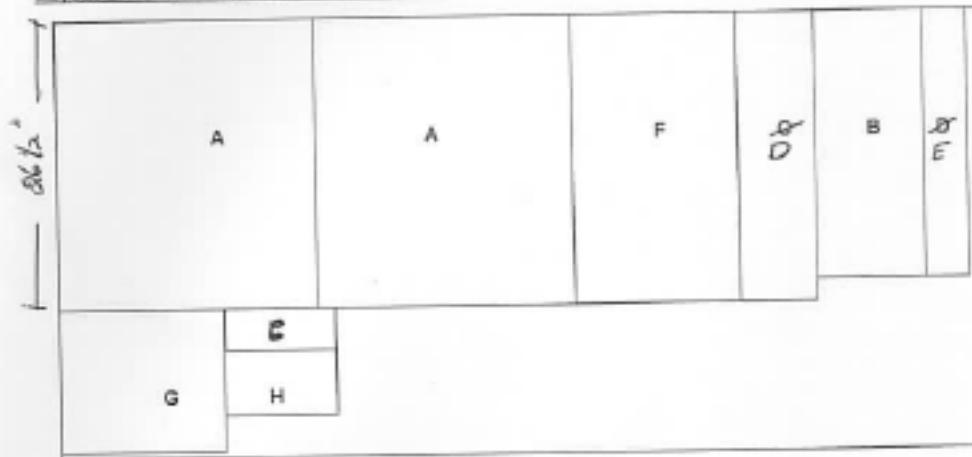
Cut the length for piece G. Mark the right hand edge with a pin. Measure 6- $\frac{1}{2}$ " from both sides of the center and cut piece G.

Cut piece E\* at the edge of the piece you marked with a pin.

Piece H can be cut anywhere, with the stripe going in the 6" direction.

If your fabric has a distinctive stripe, consider cutting the accessory pocket flap (E) from the lengthwise strip of fabric you put to one side.

Layout 2: 45" non-stripped pre-quilted fabric



Cut a lengthwise strip of your fabric that is 26-1/2" wide.  
 Cut piece A twice, piece F, and piece D.  
 Cut the length for piece B, trimming 2" from one end.  
 Cut the length for piece E, trimming 2" from one end.  
 From the remaining long piece of fabric, cut pieces G, C and H.

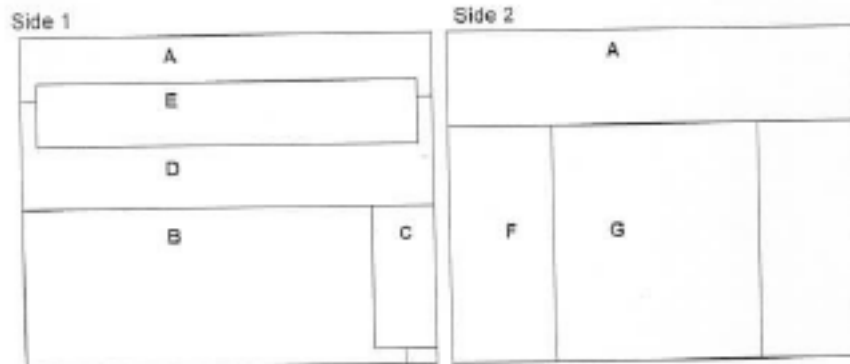
Binding and webbing covers:

From the binding fabric, cut 6 2-1/2" strips. Cut both ends of two of them at a 45° angle.

If you are covering your webbing, cut 3 additional strips at 2-1/2". Cut all ends at a 45° angle.

**Positioning the parts of the tote:**

Put the piece A's on a flat surface, and arrange the pocket and flaps in position according to the following diagram. For pre-quilted double faced fabric, use both sides in a manner that is pleasing.



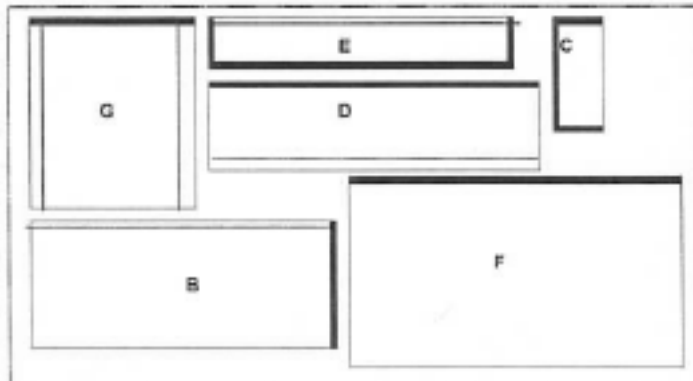
**Binding:**

Sew the two pieces with the ends cut off together. Press the seam open. Fold all pieces wrong sides together as you would for quilt binding, and iron, forming your binding. Put the long piece to one side to bind the top of your tote.

Use your walking foot to apply the binding. Using a  $\frac{3}{8}$ " seam, sew the binding to the wrong side of the items, pin to the right side. To help keep your pieces flat, measure the binding to the cut sizes of the pieces as you are applying them. Top stitch for the second stitching.

You will be able to bind each of the following from a single piece of the remaining 2-1/2" pieces:

1. Bind the left, bottom, and right sides of piece E (accessory pocket flap).
2. Bind the top of piece D (accessory pocket) and the right side of piece B (large ruler pocket)
3. Bind the top of piece F (square ruler pocket).
4. Bind the top of piece G (book pocket) and the top, left and bottom of piece C (large ruler pocket flap).



To reduce fraying, edge stitch, zigzag or overcast all unbound edges of pieces B, D, E and G that will not be touching the outside edges of the bag. These edges are identified with the extra (dotted) lines on the diagram to the left.

**Velcro, preliminary stitching:**

Cut twelve 2" pieces from the Velcro.

Sew 4 hook side pieces to the right side of piece D, with the long edge just below the binding, and the left edges of the Velcro at 3-1/2", 10-1/2", 14-3/4" and 20-3/4", measuring from the left edge of piece D. These positions will center the Velcro on the pockets you will be stitching later.



Sew 2 hook side pieces to the right side of piece B, with the long edge just below the binding, and the ends of the Velcro 1-1/2" from the edges of piece B.



Sew 1 hook side piece to the right side of piece F, with the long edge just below the binding, and the piece centered. Put pins at the top edge at 7-1/2" and 21". Turn the piece over, and sew 2 fuzzy side pieces to the wrong side



just below the binding, and with the right ends of the Velcro at the pins.

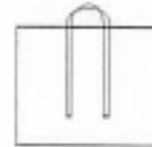
Sew 3 hook side pieces to the wrong side of one piece A, with the top of the Velcro 5/8" from the top, and the pieces centered at the middle and each quarter. Sew the three fuzzy side pieces to the wrong side of the other piece A, at the same positions.



**Handles:**

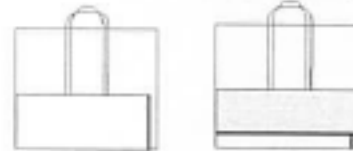
If you are covering your webbing, sew the 3 pieces you cut together, press the seams open. Press 1/4" under on one edge. Place the fabric, right sides up, so that it is about 1/8" from the right edge of the webbing. Bring the fabric around until the edge you pressed under is on the top. Smooth so that it firmly wraps the webbing, and topstitch at the edge of the fold. Topstitch the other side at the same distance from the edge of the webbing.

Cut your webbing in half. Measuring 4-1/2" from the bottom and 9" from each side, pin one handle to each side of piece A. Stitch in place, leaving 3" at the top of the piece free, and reinforcing the top.



**Side 1:**

Place piece B at the bottom of piece A, aligning the left and bottom edges. Place piece D on top of piece B, right sides together, with the top edge aligning with the top edge of B and the right and left edges aligning with the edges of piece A. Using your walking foot, stitch 1/2" from the top edge. Fold piece D into position, and top stitch the bottom edge of this piece.

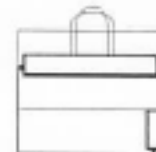


From the left, measure across piece D at 9", 14" and 17-1/2". Topstitch across piece D only, forming 4 pockets, with the Velcro centered on each pocket. Reinforce the stitching at the top of each pocket.



Center piece E above piece D, right side down, so that the long unbound edge is 1-1/2" above the top edge of piece D. Using your walking foot, stitch across piece E at 1/2". Fold piece E down, and topstitch the top edge.

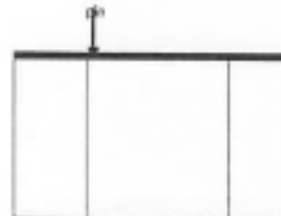
Stitch piece C even with the edge of Side 1, at 5/8", with the top edge even with the seam between pieces B and D. This stitching will serve as the top stitching, to help the flap be in the proper position on your bag.



Sew the fuzzy pieces of Velcro on the wrong side of the pocket flaps, at the positions where they will match the ones on the pockets.

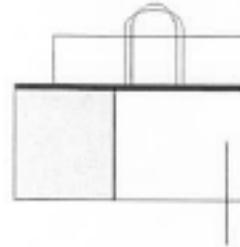
**Side 2:**

Place piece G (back pocket), centered, on top of piece F (square ruler pocket). Put a pin in piece F 1/2" towards the center from the left hand edge of piece G. Put a pin in G at the same point. Pick up G, and place it on piece F, right side down, with pins matching and stitch, then flip to the right side and topstitch. Sew a fuzzy piece of Velcro to the wrong side of piece



G, where it will match the one on the center of piece F. You may find it easier to match stripes if you simply pin in place, and then turn the edges under and topstitch.

Measure 16" from the right edge of piece F. Place piece F on top of piece A, and topstitch at this mark, making two pockets. Flip piece G to the right, turn under the edge, and topstitch through pieces F and G only. Reinforce the top edge of this stitching. Do not stitch through piece A. Stitch the hook side pieces of Velcro on piece A where they will match the ones on Piece F.



#### **Stitching the tote together:**

Place Side 1, right side up, on a table. Place Side 2, right side down, on top of Side 1 and pin. Stitch at 1/2" around the sides and bottom of the tote. Finish the edge of the seams you have just sewn.

Turn your bag to the right side. Use a pen, pencil, or the tip of your scissors (closed) to help you poke out the corners.

Using the long strip of binding, bind the top of the bag as you did before. Be careful that you do not catch the handles when you are doing this.

Fold piece H in half, forming a 5x6 square. If your fabric is not quilted, put the piece of batting between the layers. Using the binding left over from binding the top edge, bind all 4 sides of piece H (handle pad). Cut one more piece of Velcro that will fit just inside the binding on the short sides of piece H. Sew the hook side to the right side of one end, and the fuzzy side to the wrong side of the other end.